

VELOCITY
S O F T W A R E

zVPS, zView and zPro Product Update

Velocity Software Inc.
196-D Castro Street
Mountain View CA 94041
650-964-8867

Velocity Software GmbH
Max-Joseph-Str. 5
D-68167 Mannheim
Germany
+49 (0)621 373844

Richard Smrcina
Velocity Software, Inc
CAVMEN - Jan 24, 2012

Product updates

- Global Installer
- zMON
- zWRITE
- zTCP
- zVWS
- Portal
- zMAP
- zView
- zALERT
- zPRO

Velocity Software continues to invest in FULL performance management

- Performance Analysis
 - PAV, etc...
- Capacity Planning
 - zView monthly charting
 - Weekly/Monthly reporting
- Operations
 - zOperator
 - zAlert
- System Administration, Cloud, Chargeback
 - zPro

Handle console files

- Console files from all products go to ZVPS
- Provide a pre-configured SFPURGER setup
- Require an easy way for customers to send logs
 - ZVPS can be autologged nightly
 - Read in and consolidate console logs
 - View consolidated logs with Portal

Handle console files

```
ZVPS      FILELIST A0  V 169  Trunc=169 Size=115 Line=1 Col=1 Alt=0
Directory = SFSZVPS:ZVPS.CONSOLES
Cmd      Filename Filetype Fm Format Lrecl      Records      Blocks      Date      Time
INSTALL  20130115 Z1 V      102      330          6  1/16/13  0:00:11
INSTALL  20130116 Z1 V      95        7           1  1/16/13  0:00:11
SFPURGER 20130115 Z1 V      102      44           2  1/16/13  0:00:11
ZALERT   20130114 Z1 V      102     1301         18  1/16/13  0:00:11
ZALERT   20130115 Z1 V      102     2676         37  1/16/13  0:00:11
ZMAP     20130115 Z1 V      102      324          5  1/16/13  0:00:11
ZMON     20130115 Z1 V      122      863         14  1/16/13  0:00:11
ZTCP     20130115 Z1 V      102     2225         42  1/16/13  0:00:11
ZVWS     20130115 Z1 V      107        98          2  1/16/13  0:00:11
ZWRITE   20130115 Z1 V      102      295          5  1/16/13  0:00:11
INSTALL  20130114 Z1 V      111      135          3  1/15/13  0:00:11
ZMAP     20130114 Z1 V      102      409          7  1/15/13  0:00:11
ZMON     20130114 Z1 V      122      865         15  1/15/13  0:00:11
ZTCP     20130114 Z1 V      102     2214         42  1/15/13  0:00:11
ZVWS     20130114 Z1 V      129        99          2  1/15/13  0:00:11
ZWRITE   20130114 Z1 V      102      302          5  1/15/13  0:00:11
1= Help      2= Refresh  3= Quit    4= Cancel      5= Sort(dir)  6= Sort(size)
7= Backward  8= Forward  9= FL /n 10= Share    11= XEDIT/LIST 12= Cursor
DMSWFL1249I Directory has been temporarily accessed as filemode Z
====>
X E D I T  1 File
```

Handle console files

PORTAL Version 4147

tion for z/VM from Velocity Software, Inc.

Performance | zVWS administration | zTCP administration | zVPS administration | Help

Show zVPS console logs

Available zVPS Console Logs

zPRO Available Log Files

Select one or more logfiles that you wish to view or download

Download View Upload Reset

INSTALL			
<input type="checkbox"/> 16 Jan 2013 (7)	<input type="checkbox"/> 12 Jan 2013 (90)	<input type="checkbox"/> 08 Jan 2013 (225)	<input type="checkbox"/> 04 Jan 2013 (50)
<input type="checkbox"/> 15 Jan 2013 (330)	<input type="checkbox"/> 11 Jan 2013 (538)	<input type="checkbox"/> 07 Jan 2013 (292)	<input type="checkbox"/> 03 Jan 2013 (174)
<input type="checkbox"/> 14 Jan 2013 (135)	<input type="checkbox"/> 10 Jan 2013 (45)	<input type="checkbox"/> 06 Jan 2013 (42)	<input type="checkbox"/> 02 Jan 2013 (328)
<input type="checkbox"/> 13 Jan 2013 (45)	<input type="checkbox"/> 09 Jan 2013 (460)	<input type="checkbox"/> 05 Jan 2013 (43)	<input type="checkbox"/> 01 Jan 2013 (42)
SFPURGER			
<input type="checkbox"/> 15 Jan 2013 (44)	<input type="checkbox"/> 11 Jan 2013 (44)	<input type="checkbox"/> 07 Jan 2013 (44)	<input type="checkbox"/> 03 Jan 2013 (51)
<input type="checkbox"/> 14 Jan 2013 (44)	<input type="checkbox"/> 10 Jan 2013 (47)	<input type="checkbox"/> 06 Jan 2013 (44)	<input type="checkbox"/> 02 Jan 2013 (44)
<input type="checkbox"/> 13 Jan 2013 (44)	<input type="checkbox"/> 09 Jan 2013 (44)	<input type="checkbox"/> 05 Jan 2013 (44)	<input type="checkbox"/> 01 Jan 2013 (44)
<input type="checkbox"/> 12 Jan 2013 (44)	<input type="checkbox"/> 08 Jan 2013 (44)	<input type="checkbox"/> 04 Jan 2013 (44)	

Handle console files

zVPS Console Log Display - INSTALL 12 Jan 2013

Display records Showing 1 to 25 of 90 entries

First Previous **1** 2 3 4 Next Last Search:

Seq	Origin	Date	Message
1	ZVPS	2013-01-12	LOGOFF AT 09:30:57 PDT SATURDAY 01/12/13
2	ZVPS	2013-01-12	CONNECT= 00:44:10 VIRTCPU= 000:00.03 TOTCPU= 000:00.04
3	ZVPS	2013-01-12	log
4	ZVPS	2013-01-12	Ready; T=0.01/0.01 09:30:56
5	ZVPS	2013-01-12	filel * * z
6	ZVPS	2013-01-12	Ready(00028); T=0.01/0.01 09:28:46
7	ZVPS	2013-01-12	DMSWFL002E File * Z not found
8	ZVPS	2013-01-12	filel * z
9	ZVPS	2013-01-12	Ready; T=0.01/0.01 09:28:43
10	ZVPS	2013-01-12	DMSVML2060I SFSZVPS:ZALERT. accessed FORCERW as file mode Z
11	ZVPS	2013-01-12	vmlink .dir zalert. (w
12	ZVPS	2013-01-12	09:27:16 * MSG FROM ZALERT : PAGE RATE IS 47 (30)
13	ZVPS	2013-01-12	09:26:16 * MSG FROM ZALERT : PAGE RATE IS 35 (30)
14	ZVPS	2013-01-12	09:23:16 * MSG FROM ZALERT : PAGE RATE IS 31 (30)
15	ZVPS	2013-01-12	09:22:16 * MSG FROM ZALERT : PAGE RATE IS 49 (30)

Show availability of MIB groups on ESALNXUP

ESALNXUP														
Linux Node Status														
Time	Node	State	<Source>	<-Uptime-> days:hh:mm	<-Local Time->	<----- Metrics Available ----->								
15:02:00	roblx2	Up	VSI 4131	52 06:27	13/01/18 00:01	TCP	UDP	IP	ICMP	IF	SYS	UCD	HOST	VSI
15:02:00	vpnbrc	Up	VSI 4131	122 02:48	13/01/18 08:05	TCP	UDP	IP	ICMP	IF	SYS	UCD	HOST	vsi
15:02:00	redhat6x	Up	VSI 4131	401 22:41	13/01/17 15:01	TCP	UDP	IP	ICMP	IF	SYS	UCD	HOST	VSI

Add memory overcommit to ESASTR1

- Also in *subsum.overcommit*

<MDC>	Diag	Capture	Over-
Rsdnt	98	Ratio	commit
<----->			
42801	16K	0.994	6.81
42861	16K	0.994	6.81
44677	16K	0.994	6.81
42945	16K	0.994	6.81
43266	16K	0.994	6.81
42773	16K	0.994	6.81

Additional return code

- When a criteria option results in no returned data
- RC=309

ESAPARM EXEC can specify multiple virtual machines that are autologged at midnight

- ESAMAP = 'ZMAP ZVPS'

Read-only mount points can be detected

- hstmem.rwflag TM 01

LINUX HOST Storage											
<-Utilization->											
<MegaByte> Pct Alloc											
Time	Node/Group	Index	Size	Used	Full	Err	Units	R/W	Boot	Storage Description	
14:59:00	sles11x	10	4219	0	0.0	0	1K			Swap space	
14:59:00	sles11x	7	293	293	100	0	1K			Cached memory	
14:59:00	sles11x	32	247	0	0.0	0	4K	r/w	No	/dev	
14:59:00	sles11x	6	494	129	26.1	0	1K			Memory buffers	
14:59:00	sles11x	3	4713	489	10.4	0	1K			Virtual memory	
14:59:00	sles11x	31	11080	3714	33.5	0	4K	r/w	Yes	/	
14:59:00	sles11x	1	494	489	98.9	0	1K			Physical memory	
14:59:00	sles11	31	6929	3786	54.6	0	4K	r/w	Yes	/	
14:59:00	sles11	10	4211	0	0	0	1K			Swap space	
14:59:00	sles11	7	160	160	100	0	1K			Cached memory	
14:59:00	sles11	6	495	141	28.5	0	1K			Memory buffers	
14:59:00	sles11	3	4705	369	7.8	0	1K			Virtual memory	
14:59:00	sles11	1	495	369	74.7	0	1K			Physical memory	

Allow for 32 byte mount point display

- `hstmem.desc||hstmem.desc`

Several Linux screens support node groups

Per-CPU metrics display on ESALNXS

32 bit counters for DASD I/O

Enhanced LPAR metrics

Support for longer mount point name

When storage constrained

- SHARE ABSOLUTE 3%
- COMMAND SET RESERVED * 5000

Support up to 32 virtual CPUs

Support z196/EC12

Additional updates and fixes

Stability, resiliency and performance fixes

To make sure zTCP can get resources

- SHARE ABS 3%
- COMMAND SET RESERVED * 3000

Verify that SNMP has a 'nice' setting of -10

Stability and bug fixes

Significant amount of work on SSL

- Packaged as zSSL
- Soon to include client certificate support

Web server works very well with VM SSL

zVWS is instrumental in use of zView and zPro

Ships with 5 web server virtual machines

Javascript updates

Add console handling screen

Stability and bug fixes

Include process 'nice' value on ESALNXC

Increase counter sizes

HiperPAV information on ESADSD1

FCX/zHPF report changes

Support up to 32 vCPUs

Support z196/EC12

```
ESAMAP 4.1.2 01/17/13 Page 954
3 00:00:00
3 24:00:00
-----
ss---> <Storage(k)> Proc NICE
rms   Size  RSS  TYPE  Valu
-----
*****

      847   324   4    0
        0     0   4   -5
         0     0   0    0
         0     0   4    0
    11559  5828   4  -10
     2335   768   4    0
     2247   868   4    0
```

```
ESAMAP 4.1.2 01/17/13 Pg 1133
.3 00:00:00
.3 24:00:00
-----
atus--> Cache PAV <-HiperPav>
low Shr STGID BASE Type Pool
-----
On No 4040 . . .
. No 0300 . . .
On No 0120 . . .
. No 0120 . . .
. No 0120 . . .
. No 0120 . . .
. No 0120 . . .
```

Capacity planning charts

- Many requests for custom graphs
- Provide a mechanism to create graphs with any data that can be generated with ESAEXTR
- Runs automatically with ZMAP
- Charts appear in zView
- Chart data is available for custom use outside of zMAP/zView

Capacity planning charts

- Introduces a new control file
RUNCHART PARMS
- Charts can be generated by MINUTE, DAY, WEEK, MONTH or a user selected period

```

;Chart Syntax: type days strt stop extr parm
; Where type is MINUTE/DAILY/WEEK/MONTH
; "days" is the previous "n" days
; TimesT is called with these parms

;      type  days  strttime  stop  extractname  parm
CHART  MINUTE  1     08:00   17:00   LXCPUMIN     LINUX001
CHART  MINUTE  1     08:00   17:00   LXSTORMN     LINUX001
CHART  MINUTE  1     08:00   17:00   LXSWAP       LINUX001
CHART  MINUTE  1     08:00   17:00   LXBLKIO      LINUX001

;HART  DAILY   1     00:00   24:00   LPARCPUS
;HART  DAILY   1     00:00   24:00   LPARCPUS     lparname
CHART  DAILY   1     00:00   24:00   UXACT        System:
CHART  DAILY   1     00:00   24:00   UXACT        LINUX001

CHART  WEEK    7     00:00   24:00   UXACT        System:
CHART  WEEK    7     07:00   17:00   LXCPU        LINUX001

CHART  MONTH   31    00:00   24:00   UXACT        System:
CHART  MONTH   31    *       *       LXCPUM       LINUX001
CHART  MONTH   31    *       *       LXSTOREM     LINUX001

CHART  NDAYS   31    *       *       LXCPU        LINUX001
CHART  NDAYS   31    *       *       LXSTORE      LINUX001

CHART  NDAYS   35    *       *       UDIO         LINUX001
CHART  NDAYS   35    *       *       USTOR        LINUX001
CHART  NDAYS   35    *       *       UCPU         LINUX001

```

Capacity planning charts

- Extracting data
LXCPUMIN ESAEXTR
- 'Title' becomes the heading of the graph
 - Variables &USERID, &SDATE, &EDATE
 - &USERID is the qualifying parameter passed
- Additional 'Title' statements define the graph labels and Y-Axis legend

```
EXTRACT:                ; First extract system data
Title = 'Linux CPU Analysis by Node &USERID &SDATE'
Title = '*Labels CPU Sys_CPU User_CPU'
TITLE = '*Yaxis Percent'

X = 'STOPTIME'
Y = 'NODE'
Y = 'UCDSYS.TOTCPU ' ;cpu utilization
Y = 'UCDSYS.SYSTPCT'
Y = 'UCDSYS.USERPCT'
```

Capacity planning charts

- Output data uses specific file names for identification

```

LINUX001 CTLXC016 A2  V 80  Trunc=80 Size=543 Line=0 Col=1 Alt=0

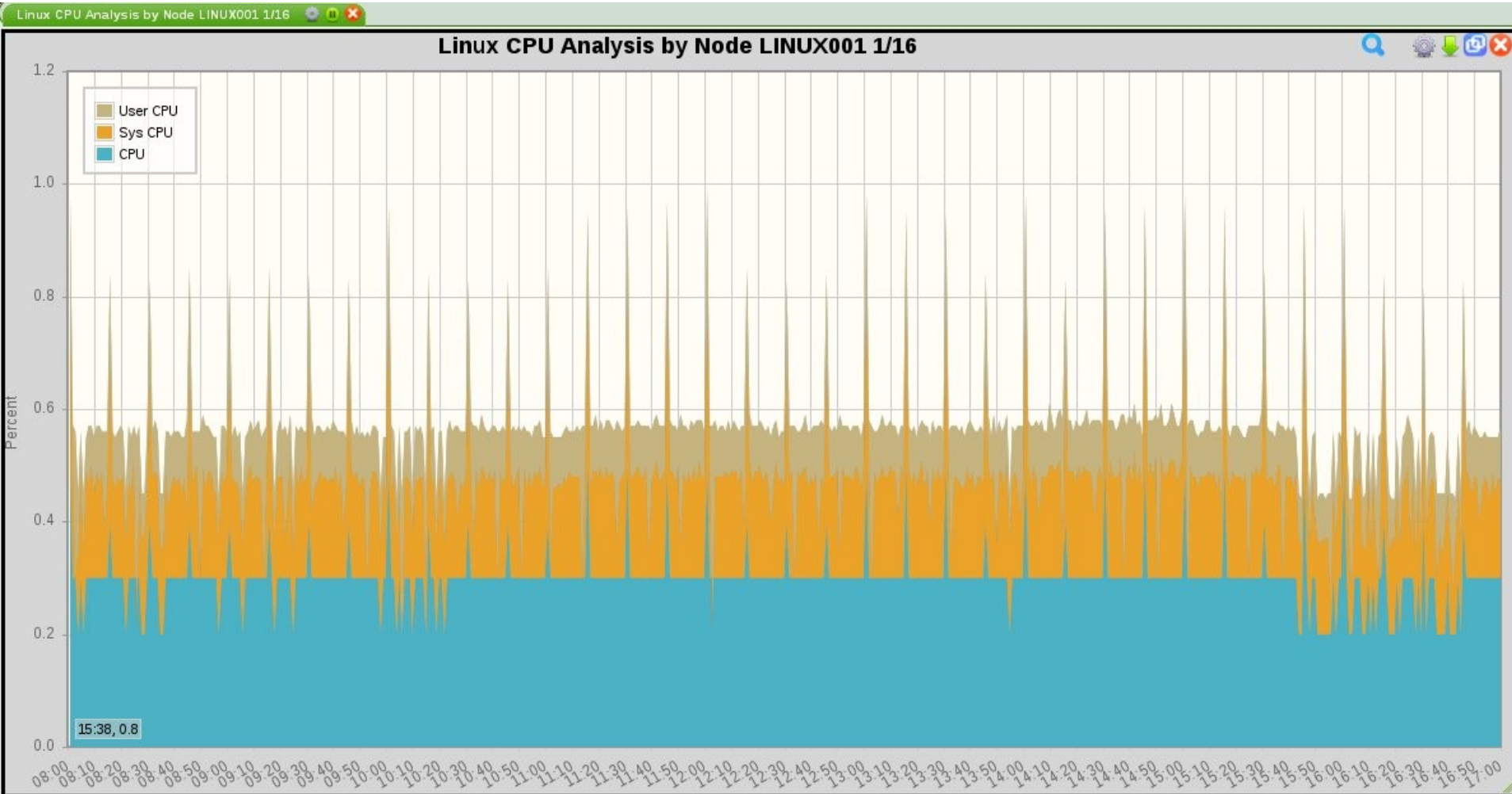
      |...+....1....+....2....+....3....+....4....+....5....+....6.
===== * * * Top of File * * *
===== TITLE: Linux CPU Analysis by Node &USERID &SDATE
===== Labels: CPU Sys_CPU User_CPU
===== Yaxis: Percent
===== "20130116","080000","080100","linux001","0.5","0.31","0.16"
===== "20130116","080100","080200","linux001","0.3","0.20","0.07"
===== "20130116","080200","080300","linux001","0.3","0.00","0.26"
===== "20130116","080300","080400","linux001","0.2","0.15","0.10"
===== "20130116","080400","080500","linux001","0.3","0.19","0.07"
===== "20130116","080500","080600","linux001","0.2","0.15","0.10"

```

Capacity planning charts

- In zView

The screenshot displays the zView interface with a top navigation bar containing buttons for 'Add tab', 'Arrange', 'Load View', and 'Save View'. Below this, there are four main menu items: 'zMON', 'Graphs', 'zMAP', and 'Capacity'. The 'Capacity' menu item is highlighted. The main content area is titled 'Minute Reports' and shows a hierarchical view of reports for 'Linux' and 'LINUX001'. The reports are organized by date, with the most recent report for '16 Jan 2013' expanded to show a list of metrics: 'Linux Block I/O', 'Linux CPU Analysis by Node', and 'Linux Swap Rate'. Below this, reports for '15 Jan 2013' and '14 Jan 2013' are visible but not expanded.



Capacity planning charts

- The following samples are provided

LPARCPUS – LPAR utilization

LXBLKIO - Linux block I/O

LXCPU - Linux CPU utilization by type

LXCPUM – Monthly Linux CPU utilization by type

LXCPUMIN – Minute Linux CPU utilization by type

LXSTORE – Linux storage usage by type

LXSTOREM – Monthly Linux storage usage by type

LXSTORMN – Minute Linux storage usage by type

LXSWAP – Linux swap rate

UCPU – User CPU utilization

UDIO – User DASD I/O rate

USTOR – User storage usage

UXACT - User wait analysis

Capacity planning charts

- Graphs can be generated manually
 - Testing new
 - Recovering graph data from history
- From ZMAP (always log off when completed)
RUNCHART parms

where parms are as follows:

DAILY yyymmdd

WEEK week_number

MONTH month_number

NDAYS

MINUTE yyymmddd

Capacity planning charts

- Automatic chart deletion
- In RUNAUTO PARMS

CHARTCNT 6 8 7 3 1

Keeps 6 monthly files,

8 weekly files,

7 daily files,

3 minute files and

1 NDAY file

for each graph specified in RUNCHART PARMS file.

Stability and support fixes

Reduced local browser storage requirements

Capacity Planning chart processing/display

Newer functions (eg: Capacity charts) require updates in other base products

- Make sure everything is up to date to get the latest support

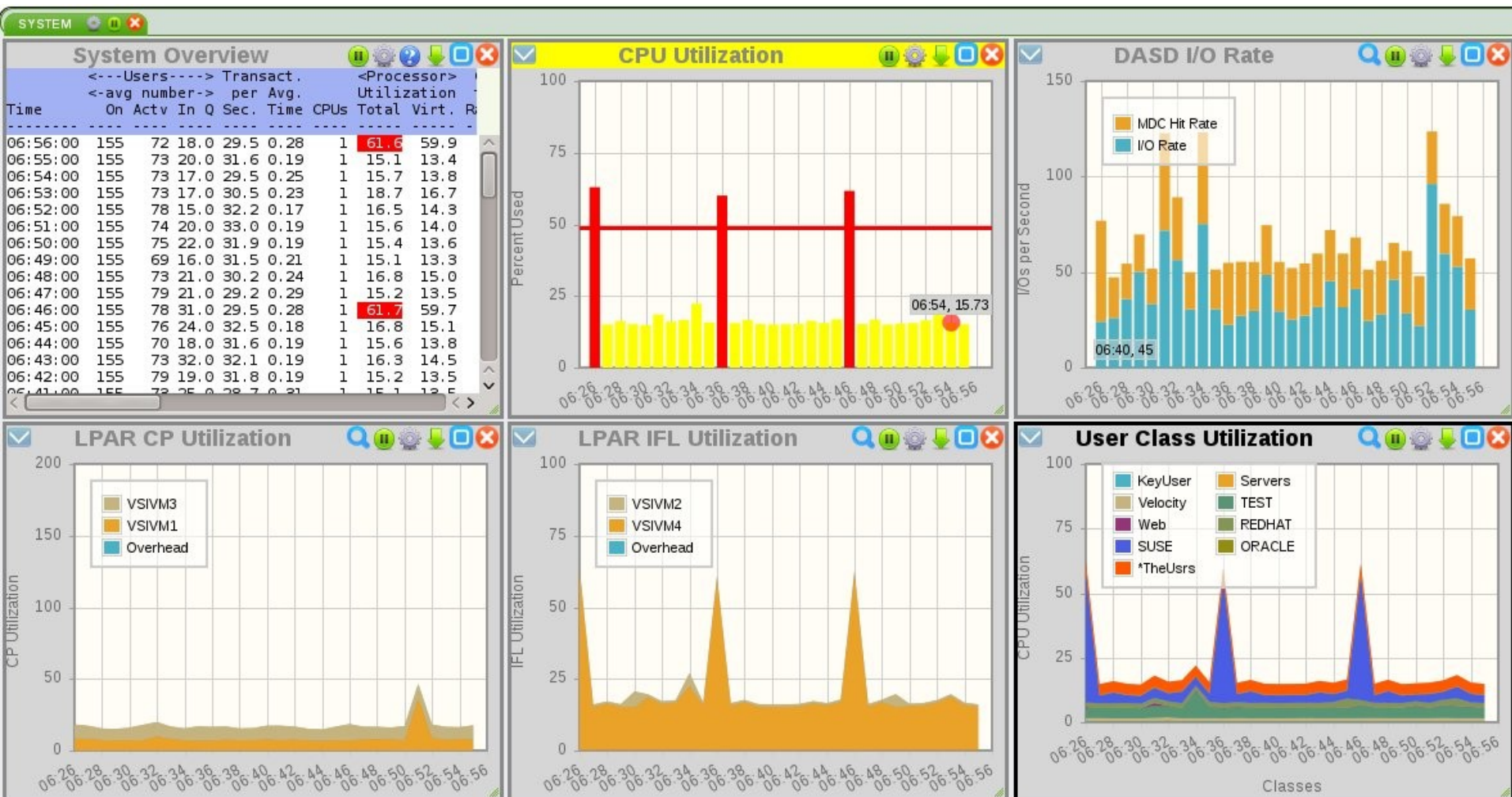
zView menu

- Expandable sections
- Select a list item to display
- Tabbed display area
- Tab can be saved as a view
- Loaded later
- Made into default

The screenshot displays the zView application interface with three tabs. Each tab has 'Add tab' and 'Arrange' buttons at the top, and 'Load View' and 'Save View' buttons below. The first tab shows a menu with categories: zMON, Graphs, zMAP, Capacity, System, Service Level Analysis, User, Shared File System, CPU, Main Storage, Paging and Spooling, Input/Output Subsystem, TCP/IP Network, Linux Reports, VSE, Screen Index, Emulation, Alert Definitions, and Custom Samples. The second tab shows a detailed view of the Linux section with metrics: Block I/O Rate, CMM Size, Node Utilization, Storage Allocation, Swap Rate, Swap Utilization, and Switch Rate. The third tab shows a 'Daily Reports' section with a list of dates from Thu 17 Jan 2013 to Fri 21 Dec 2012.

zView display

- Default startup view



zView display

- View handling

Load/Save Views ×

Load a view

Load view from a cookie
Load view from the PC
Load view from the server
Remove startup view

Load/Save Views ×

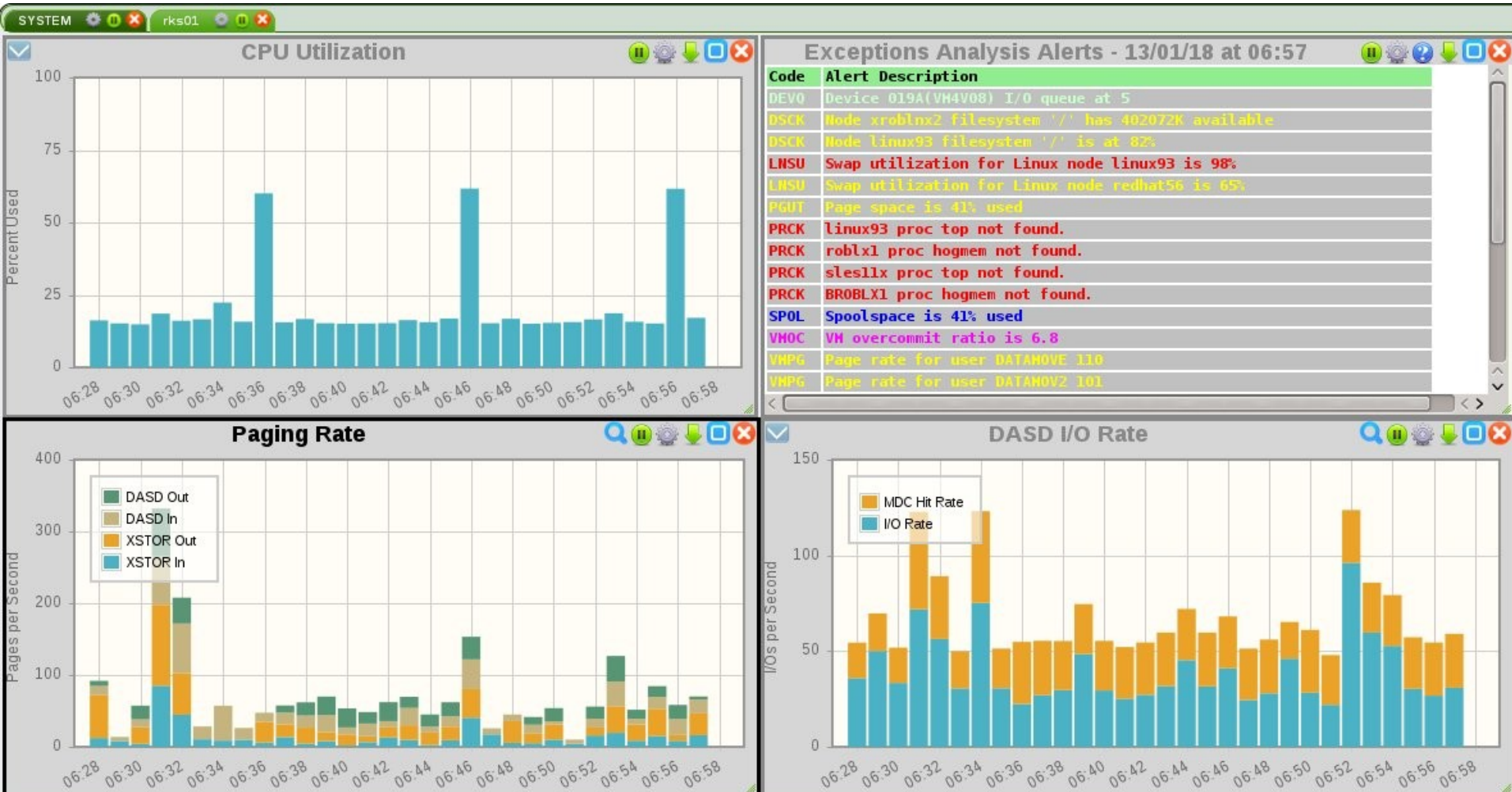
Click on a viewname to load

rks01 rks02 rks03 alrtview

Cancel

zView display

- View handling



Future development...

- CECLIST enhancements
 - Enterprise view
- Security
- Sort display columns
- CSV downloads
- Tablet support
- Single server view
- Distributed server view
(Windows, other Linux/Unix, etc)

Allow specification of TRAP on LEVEL statement

- Synonym of ALERT
- Triggers an SNMP trap

Support cascading alerts

- One alert triggers another alert

Add new standard variables

- &code - Alert code
- &tlevel - Trigger level

Generalized notification system

- Allows specification of emails or traps that can be sent to users for specific alerts
- Triggered by NOTIFY on the LEVEL statement
- Messages can be sent out at certain times of day
- Calendar mechanism available to exclude specified dates

Added SMSG support when running disconnected

- Available commands, STATUS, RESTART, STOP
- Configuration file allows specification of authorized users

When running disconnected, alerts execute at 15 seconds after each minute

New LTEXT directive which allows a separate text message on LEVEL statements

Alert counting support

- Turned on with COUNT option on ALERT statement
- Display with &tcount variable

Code optimizations and fixes

Coming soon...

- Initial notification when using LIMIT statement
 - Provides first notice that a threshold has been exceeded
- Better handling of disconnected session
 - Allow re-connect and disconnect from 3270
- Alert logging
 - All alerts that would come up on the display
 - Controlled at alert level
 - Retention of both alert and notification log files

Support for VM:Secure as directory manager, ESM and SMAPI

- New configuration keywords
- VM:Secure config requirements in README

Wizards

- Allows common tasks to be done quickly



Wizards

- Add minidisk wizard

Add Minidisk Wizard

Minidisk definition

Userid: Virtual address: Devtype:

Disksize: AllocType: Location:

- Storage wizard

User Storage Wizard

Change storage

Userid:

Default storage

Value: Units:

Maximum storage

Value: Units:

New spool display option

zPRO System Status - Spool report by user

Spool Files Summary Report - Click on a user to expand

Sort Blks Sort User

Reader files/blocks: 1,779 141,630
 Printer files/blocks: 256 26,235
 Punch files/blocks: 0 0
 Total files/blocks: 2,035 167,865

User: ES4MON	188	22,911	1	229	0	0	189	23,140
User: MAINT	187	23,035	0	0	0	0	187	23,035
User: ESAMON	33	12,651	0	0	0	0	33	12,651

Select Page Reset Purge Xfer Hold Nohold SysHold SysFree

Display 10 records Copy CSV PDF Print

Search:

Showing 1 to 10 of 33 entries

First Previous 1 2 3 4 Next Last

Sel	Queue	Owner ID	Spool ID	Class	Device	Records	Copies	Hold	Date	Time	Filename	Filetype	Dist
<input type="checkbox"/>	RDR	ESAMON	3894	T	CON	11,966	001	NONE	2013-01-02	00:00:02			ESASERVE
<input type="checkbox"/>	RDR	ESAMON	3895	T	CON	10,995	001	NONE	2013-01-02	00:00:02			ESAWRITE
<input type="checkbox"/>	RDR	ESAMON	3896	T	CON	26	001	NONE	2013-01-03	16:10:57			ESAMON
<input type="checkbox"/>	RDR	ESAMON	3897	T	CON	13,845	001	NONE	2013-01-03	00:00:02			ESAWRITE
<input type="checkbox"/>	RDR	ESAMON	3898	T	CON	14,910	001	NONE	2013-01-03	00:00:02			ESASERVE
<input type="checkbox"/>	RDR	ESAMON	3899	T	CON	16,530	001	NONE	2013-01-04	00:00:07			ESAWRITE
<input type="checkbox"/>	RDR	ESAMON	3900	T	CON	17,512	001	NONE	2013-01-04	00:00:07			ESASERVE
<input type="checkbox"/>	RDR	ESAMON	3901	T	CON	15,465	001	NONE	2013-01-05	00:00:08			ESAWRITE
<input type="checkbox"/>	RDR	ESAMON	3902	T	CON	16,599	001	NONE	2013-01-05	00:00:08			ESASERVE
<input type="checkbox"/>	RDR	ESAMON	3903	T	CON	16,721	001	NONE	2013-01-06	00:00:07			ESASERVE

User: TIMK	6	11,911	1	1	0	0	7	11,912
User: SUSELNX2	0	0	1	9,051	0	0	1	9,051
User: DSADEV	229	8,059	2	42	0	0	231	8,101

New spool display option

zPRO System Status - Spool all system																			
Select Page		Reset	Purge	Xfer	Hold	Nohold	SysHold	SysFree											
Display	25	records	Copy	CSV	PDF	Print	Search:												
Showing 1 to 25 of 2,035 entries											First	Previous	1	2	3	4	5	Next	Last
Sel	Queue	Owner ID	Spool ID	Class	Device	Records	Copies	Hold	Date	Time	Filename	Filetype	Dist						
<input type="checkbox"/>	RDR	DSADEV	0353	T	CON	76	001	USER	2011-04-21	14:42:18			VSIMAIN						
<input type="checkbox"/>	RDR	DSADEV	0304	T	CON	14	001	USER	2011-03-09	16:56:01			VSIMAIN						
<input type="checkbox"/>	RDR	DSADEV	0290	T	CON	14	001	USER	2010-12-14	12:42:27			SYSPROG						
<input type="checkbox"/>	RDR	DSADEV	0287	T	CON	32	001	USER	2010-12-10	14:13:29			SYSPROG						
<input type="checkbox"/>	RDR	DSADEV	0350	T	CON	99	001	USER	2011-04-20	16:20:07			VSIMAIN						
<input type="checkbox"/>	RDR	DSADEV	0302	T	CON	1,849	001	USER	2011-02-18	14:42:56			SYSPROG						
<input type="checkbox"/>	RDR	DSADEV	0301	T	CON	54	001	USER	2011-02-18	14:12:54			VSIMAIN						
<input type="checkbox"/>	RDR	DSADEV	0246	T	CON	69	001	USER	2010-09-15	11:19:26			VSIMAIN						
<input type="checkbox"/>	RDR	DSADEV	0317	T	CON	195	001	USER	2011-03-22	09:42:20			VSIMAIN						
<input type="checkbox"/>	RDR	DSADEV	0316	T	CON	141	001	USER	2011-03-22	08:51:48			VSIMAIN						
<input type="checkbox"/>	RDR	DSADEV	0303	T	CON	54	001	USER	2011-03-07	16:45:51			VSIMAIN						
<input type="checkbox"/>	RDR	DSADEV	0307	T	CON	23	001	USER	2011-03-18	14:56:17			VSIMAIN						
<input type="checkbox"/>	RDR	DSADEV	0484	T	CON	482	001	USER	2011-08-15	14:42:29			VSIMAIN						

User status actions

- On a single user

zPRO System Status - User Display

Reset All Action Colors

Display 20 records Copy CSV PDF Print Search: s11

Showing 1 to 18 of 18 entries (filtered from 1,334 total entries)

Sel	Userid	Status	User type	CPU Util	VM Size MB	Share
<input type="checkbox"/>	RMTS11G1	DSC	USER	0.085	256	100R
<input type="checkbox"/>	SLES11	DSC	USER	0.206	512	100R/20.01068A-S
<input type="checkbox"/>	SLES11X	DSC	USER	0.321	512	100R
<input type="checkbox"/>	SLES11X2	DSC	USER	0.287	1024	100R
<input type="checkbox"/>	S11S2ORA	DSC	USER	0.056	1024	100R
<input type="checkbox"/>	RMTS11G2	!Inactive	USER	0.000	0	0
<input type="checkbox"/>	S11RS001	!Inactive	USER	0.000	0	0
<input type="checkbox"/>	S11RS002	!Inactive	USER	0.000	0	0
<input type="checkbox"/>	S11RS003	!Inactive	USER	0.000	0	0
<input type="checkbox"/>	S11RS004	!Inactive	USER	0.000	0	0
<input type="checkbox"/>	S11RS005	!Inactive	USER	0.000	0	0
<input type="checkbox"/>	S11RS006	!Inactive	USER	0.000	0	0
<input type="checkbox"/>	S11RS007	!Inactive	USER	0.000	0	0
<input type="checkbox"/>	S11RS008	!Inactive	USER	0.000	0	0
<input type="checkbox"/>	S11RS009	!Inactive	USER	0.000	0	0
<input type="checkbox"/>	S11S2GLD	!Inactive	USER	0.000	0	0
<input type="checkbox"/>	S11S2RS1	!Inactive	USER	0.000	0	0
<input type="checkbox"/>	S11S2RS2	!Inactive	USER	0.000	0	0

Select Operation x

Select the action you wish to perform

- Stop Immediate
- Stop with System Default Wait
- Stop Within
- Stop By
- Start
- Set SECUSER to
- Set OBSERVER to
- Send a Message

0 0 0 0 0 0 0 0 0

User status actions

- Or select multiple users

Reset All Action Colors						
Display 20 records Copy CSV PDF Print						
Showing 1 to 18 of 18 entries (filtered from 1,334 total entries)						
Sel	Userid	Status	User type	CPU Util	VM Size MB	Sh
<input type="checkbox"/>	RMTS11G1	DSC	USER	0.085	256	100R
<input type="checkbox"/>	SLES11	DSC	USER	0.206	512	100R/2
<input type="checkbox"/>	SLES11X	DSC	USER	0.321	512	100R
<input type="checkbox"/>	SLES11X2	DSC	USER	0.287	1024	100R
<input type="checkbox"/>	S11S2ORA	DSC	USER	0.056	1024	100R
<input type="checkbox"/>	RMTS11G2	!Inactive	USER	0.000	0	0
<input checked="" type="checkbox"/>	S11RS001	!Inactive	USER	0.000	0	0
<input checked="" type="checkbox"/>	S11RS002	!Inactive	USER	0.000	0	0
<input checked="" type="checkbox"/>	S11RS003	!Inactive	USER	0.000	0	0
<input checked="" type="checkbox"/>	S11RS004	!Inactive	USER	0.000	0	0
<input checked="" type="checkbox"/>	S11RS005	!Inactive	USER	0.000	0	0
<input type="checkbox"/>	S11RS006	!Inactive	USER	0.000	0	0
<input type="checkbox"/>	S11RS007	!Inactive	USER	0.000	0	0
<input type="checkbox"/>	S11RS008	!Inactive	USER	0.000	0	0

Select Operation x

Select the action you wish to perform

- Stop Immediate ?
- Stop with System Default Wait ?
- Stop Within ?
- Stop By ?
- Start ?
- Set SECUSER to ?
- Set OBSERVER to ?
- Send a Message ?

Go
Clear
Cancel

Security changes

- Control which directory options a user can set
- Maximum amount of storage
- Maximum absolute share
- Allow RACF user to not have to reset their password on first login
- Allow RACF user to not be required to change their password at set intervals
- Designate who can view/alter
 - DASD, CTC, OSA, FCP, Vswitch


Development ideas

- User accounting setup and tracking
- Auto start server after cloning
- Dirmaint configuration
- Multiple device attach at clone time
- DCSS waterfall
- Specific userid/IP address at clone time
- Mobile/tablet support

User accounting setup and tracking

System Status	Manage Users	z/VM Admin	Velocity Products	Security
	Directory Maintenance			
	Cloning			
	zPRO Server Expirations			
	IP Address Maintenance			
	Group Freespace			
	zPRO Wizards			
				New User Wizard
				User Minidisk Wizard
				User Storage Wizard
				New Proxy Wizard
				User Network Wizard
				User SFS Wizard
				User Accounting Wizard

Welco



User accounting setup and tracking

Cost & Accounting Wizard

User accounting

Userid:

Today

	Usage	Cost
CPU Hours	.183	3.660
Memory GB	18.6	18.6
Storage GB	0.14	0.14
IFT Xmit GB	2.133	0.0711
DC Factor		44.9422
Total		67.4133

This month

	Usage	Cost
CPU Hours	4.209	84.180
Memory GB	3422.4	427.8
Storage GB	3.22	3.22
IFT Xmit GB	1.6353	1.6353
DC Factor		1033.6706
Total		1550.5059

Cost factors

	Cost	
CPU: \$	<input type="text" value="20"/>	Per CPU Hour
Memory: \$	<input type="text" value="1"/>	Per GB/Hours
Storage: \$	<input type="text" value="1"/>	Per GB/Month
IFT Xmit GB: \$	<input type="text" value="1"/>	Per GB Xfer/Month
Data Center factor:	<input type="text" value="2"/>	

Dirmaint configuration

Dirmaint configuration

Config files Extent Control Authfor Control

Regions

Region Name	Valid	Start	End	DevType
<input type="checkbox"/> VMR001	VMR001	0	End	3390-03
<input type="checkbox"/> VMR002	VMR002	0	End	3390-03

Add
Delete
Modify

Region Name: Valid: Start: End: Dev Ty|

Exclude

UserID	Minidisk
<input type="checkbox"/> MAINT	12*
<input type="checkbox"/> SYSDUMP	125

Add
Delete
Modify

UserID: Minidisk:

Defaults

Device Type	Size
<input type="checkbox"/> 3390-64	65536
<input type="checkbox"/> 9336-2G	214748364

Add
Delete
Modify

Device Type: Size:

Groups

VMR

Allocate Rotating

Group content Available Region

VMR001
VMR002

VMR003

Add

Specific userid/IP address at clone time

Form3

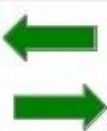
Clone new image(s) from golden image LINUX001

Create a single userid Create a multiple userids Count

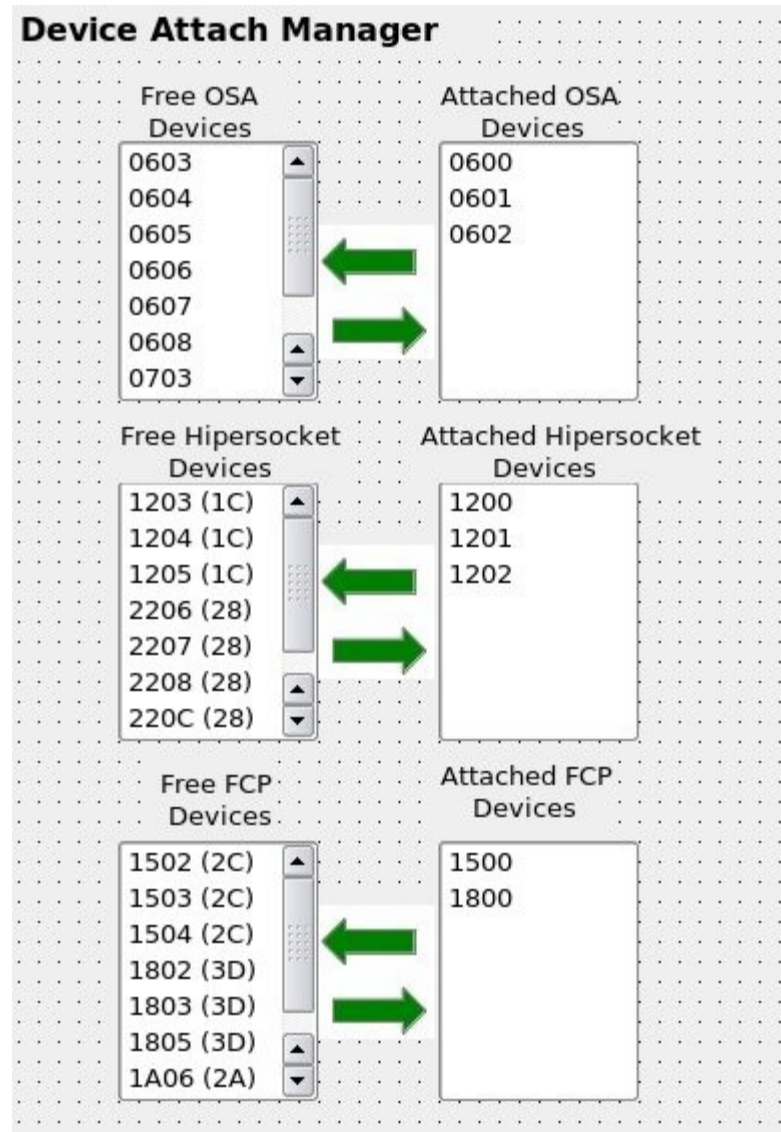
Virtual Machine Name Pattern: Password(Same password for all):

Enter virtual machine name Assign IP Addresses Add nodes to zTCP Community name:

Virtual Machine Names:	IP Addresses:	Available IP Addresses:
ZA002MVW	192.168.7.90	192.168.7.94
ZA003MVW	192.168.7.200	192.168.7.95
ZA004MVW	192.168.7.202	192.168.7.98
ZB006COL	192.168.7.91	192.168.7.99
ZB007COL	192.168.7.92	192.168.7.204
ZB008COL	192.168.7.203	192.168.7.205
ZB009COL	192.168.7.93	192.168.7.206



Multiple device attach
at clone time



Operator console display and control

Provides a full screen interface for system messages

Allows message actions

- Hold, highlight, color, non-display
- Send a message, run an EXEC
- Initiate a trap
- Trigger zAlert

Extensive command interface

- Controls operator console
- Any DIALed terminal sessions

Locate forward/backward

- Date/Time

Redisplay

Split screen

Messages retained in daily files

- Retention defaults to 90 days
- Configurable

```

x3270-4 VSIVM2-vpn <3>
File Options
Screen: ZOPER Velocity Software ESAMON 4.110 01/15 10:09
1 of 1 OPERATOR Console 2096 34842

08:42:09 TCPIP2 08:42:09 DTCSTM163I Telnet server: Conn 3: Connection opened
01/21/13 at 08:42:09
08:42:09 TCPIP2 08:42:09 DTCPRC150I Conn 3: Foreign internet address and p
ort: net address = 192.168.5.75, port= 4029
08:42:09 TCPIP2 08:42:09 DTCSTM132I Conn 3: Ldsf device 0000000F created
08:44:05 TCPIP2 08:44:05 DTCSTM163I Telnet server: Conn 8: Connection opened
01/21/13 at 08:44:05
08:44:05 TCPIP2 08:44:05 DTCPRC150I Conn 8: Foreign internet address and p
ort: net address = 192.168.5.75, port= 4042
08:44:05 TCPIP2 08:44:05 DTCSTM132I Conn 8: Ldsf device 0000000E created
08:44:53 OPERATOR 08:44:53 GRAF L0009 DROP FROM OPERATOR DIALED= 2
09:00:00 OPERATOR 09:00:00 HCPMXE6224I Event recording is pending because there
are no users connected to *MONITOR for this type of data.
09:00:00 OPERATOR 09:00:00 HCPMXE6224I Sample recording is pending because ther
e are no users connected to *MONITOR for this type of data.
09:01:02 DATAMOVE DVHRLY3886I Hourly processing started; with 0 log
09:01:02 DATAMOVE DVHRLY3886I files.
09:01:03 DIRMAINT DVHRLY3886I Hourly processing started; with 0 log
09:01:03 DIRMAINT DVHRLY3886I files.
09:01:18 OPERATOR 09:01:18 GRAF L0008 DISCONNECT TROTHR USERS = 59
09:06:37 TCPIP2 09:06:37 DTCSTM163I Telnet server: Conn 3: Connection opened
01/21/13 at 09:06:37
09:06:37 TCPIP2 09:06:37 DTCPRC150I Conn 3: Foreign internet address and p
ort: net address = 192.168.5.80, port= 49295
09:06:38 TCPIP2 09:06:38 DTCSTM132I Conn 3: Ldsf device 00000009 created
09:06:42 OPERATOR 09:06:42 GRAF L0009 RECONNECT TROTHR USERS = 59 FROM 19
2.168.5.80
09:54:59 OPERATOR 09:54:59 GRAF L000A LOGOFF AS VSIMAINT USERS = 58
10:00:00 OPERATOR 10:00:00 HCPMXE6224I Event recording is pending because there
are no users connected to *MONITOR for this type of data.
10:00:00 OPERATOR 10:00:00 HCPMXE6224I Sample recording is pending because ther
e are no users connected to *MONITOR for this type of data.
10:01:02 DIRMAINT DVHRLY3886I Hourly processing started; with 0 log
10:01:02 DIRMAINT DVHRLY3886I files.
10:01:02 DATAMOVE DVHRLY3886I Hourly processing started; with 0 log
10:01:02 DATAMOVE DVHRLY3886I files.
PF1=Help 2= 3=Quit 4= 5=A11 6=PFKEY Off
PF7=Backward 8= 9=Loc Back 10= 11= 12=Retrieve
====>

```



Display all messages with certain text

```

x3270-4 VSIVM2-vpn
File Options
Screen: ZOPER Velocity Software ESAMON 4.110 01/15 08:01
1 of 1 REDISPLAY 01/21/13 OPERATOR Console 2096 34842

----- Monday January 21, 2013 -----
05:54:52 TCPIP2 05:54:52 DTCPRC150I Conn 1: Foreign internet address and p
ort: net address = 192.168.5.76, port= 39558
06:31:03 TCPIP2 06:31:03 DTCPRC150I Conn 3: Foreign internet address and p
ort: net address = 192.168.5.77, port= 1841
06:41:38 TCPIP2 06:41:38 DTCPRC150I Conn 4: Foreign internet address and p
ort: net address = 192.168.5.76, port= 41195
06:49:40 TCPIP2 06:49:40 DTCPRC150I Conn 5: Foreign internet address and p
ort: net address = 192.168.5.80, port= 48592
06:55:05 TCPIP2 06:55:05 DTCPRC150I Conn 6: Foreign internet address and p
ort: net address = 192.168.5.76, port= 41467
07:41:40 TCPIP2 07:41:40 DTCPRC150I Conn 1: Foreign internet address and p
ort: net address = 192.168.5.76, port= 42113
07:42:12 TCPIP2 07:42:12 DTCPRC150I Conn 7: Foreign internet address and p
ort: net address = 192.168.5.76, port= 42114
07:49:20 TCPIP2 07:49:20 DTCPRC150I Telnet server: aborting conn 3 net a
ddress = 192.168.5.77, port= 1841
08:03:24 TCPIP2 08:03:24 DTCPRC150I Conn 1: Foreign internet address and p
ort: net address = 192.168.5.3, port= 50592
08:42:09 TCPIP2 08:42:09 DTCPRC150I Conn 3: Foreign internet address and p
ort: net address = 192.168.5.75, port= 4029
08:44:05 TCPIP2 08:44:05 DTCPRC150I Conn 8: Foreign internet address and p
ort: net address = 192.168.5.75, port= 4042
09:06:37 TCPIP2 09:06:37 DTCPRC150I Conn 3: Foreign internet address and p
ort: net address = 192.168.5.80, port= 49295
14:58:10 TCPIP2 14:58:10 DTCPRC150I Conn 5: Foreign internet address and p
ort: net address = 192.168.5.3, port= 57389

----- Tuesday January 22, 2013 -----
00:11:36 TCPIP2 00:11:36 DTCPRC150I Conn 4: Foreign internet address and p
ort: net address = 192.168.5.74, port= 4654
05:13:33 TCPIP2 05:13:33 DTCPRC150I Conn 0: Foreign internet address and p
ort: net address = 192.168.5.71, port= 36730
07:53:38 TCPIP2 07:53:38 DTCPRC150I Conn 1: Foreign internet address and p
ort: net address = 192.168.5.3, port= 57762
07:57:16 TCPIP2 07:57:16 DTCPRC150I Conn 0: Foreign internet address and p
ort: net address = 192.168.5.76, port= 50504

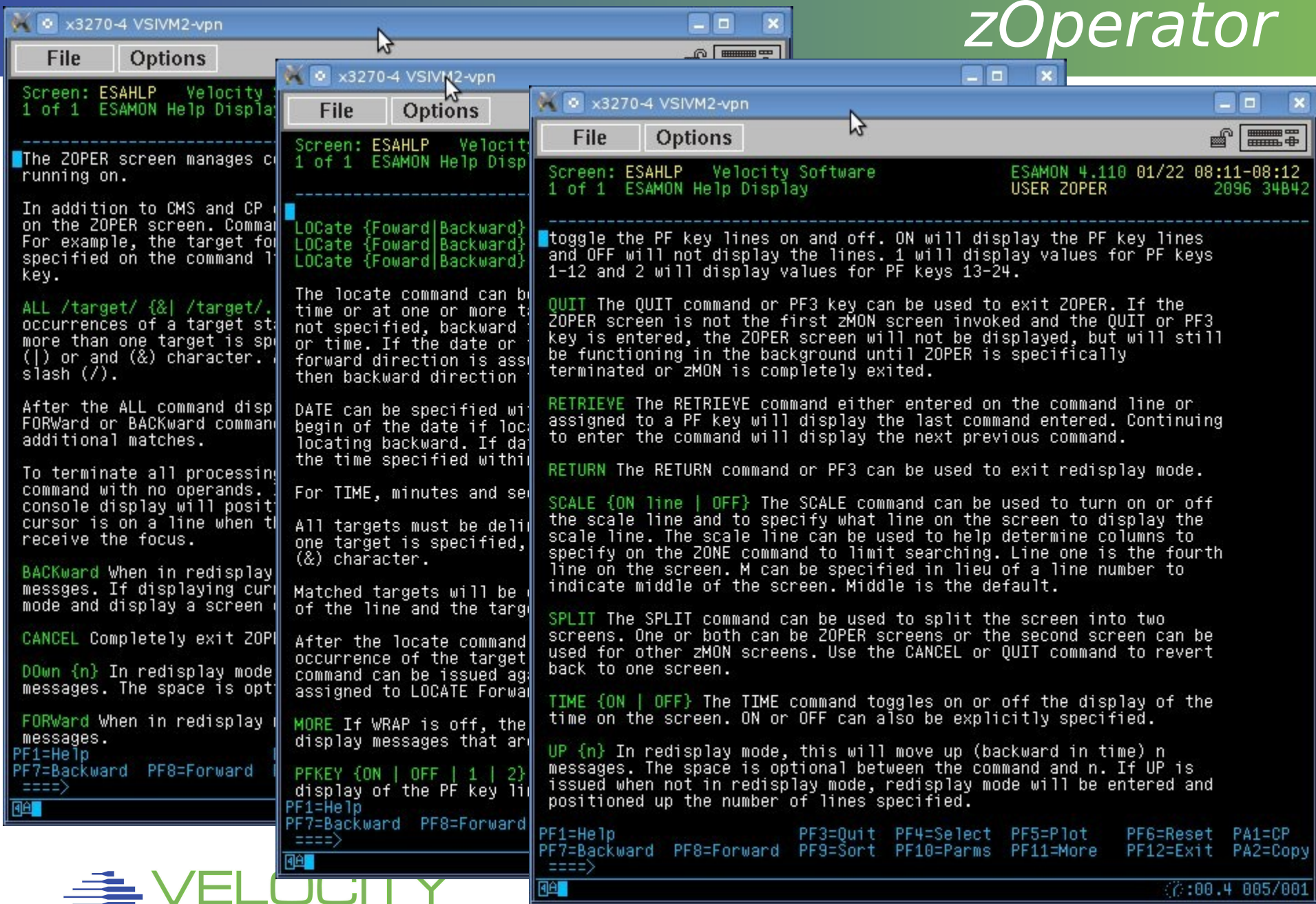
PF1=Help 2= 3=Return 4= 5=A11 6=PFKEY Off
PF7=Backward 8=Forward 9=Loc Back 10=Loc Fwd 11= 12=Retrieve
====> a11/dtcpyrc150I/
:00.5 043/023
    
```

Locate a specific date

```

x3270-4 VSIVM2-vpn
File Options
Screen: ZOPER Velocity Software ESAMON 4.110 01/15 08:04
1 of 1 REDISPLAY 01/21/13 OPERATOR Console 2096 34842

22:00:00 OPERATOR 22:00:00 AUTO LOGON *** VSIBKUP USERS = 57 BY CROM
22:01:03 DATAMOVE DVHRLY3886I Hourly processing started; with 0 log
22:01:03 DATAMOVE DVHRLY3886I files.
22:01:03 DIRMAINT DVHRLY3886I Hourly processing started; with 0 log
22:01:03 DIRMAINT DVHRLY3886I files.
22:49:06 OPERATOR 22:49:06 USER DSC LOGOFF AS VSIBKUP USERS = 56
23:00:00 OPERATOR 23:00:00 HCPMXE6224I Event recording is pending because there
are no users connected to *MONITOR for this type of data.
23:00:00 OPERATOR 23:00:00 HCPMXE6224I Sample recording is pending because there
are no users connected to *MONITOR for this type of data.
23:00:00 OPERATOR 23:00:00 AUTO LOGON *** SFPURGER USERS = 57 BY CROM
23:00:02 SFPURGER DMSCYS2452I SFPURGER starting at 23:00:00 on 21 Jan 2013.
23:00:02 SFPURGER DMSCYS2453I Running in RUN mode - RUN13021.
23:00:02 SFPURGER DMSCYS2456I Erasing old output files till 2012357.
23:00:02 SFPURGER DMSCYS2459I Examining output file ...
23:00:02 SFPURGER DMSCYS2462I Spool file scanning begins ...
23:00:02 SFPURGER DMSCYS2463I 18 of the 2520 spool files HAVE been purged.
23:00:02 SFPURGER DMSCYS2485I 0 of the 2520 spool files HAVE been changed.
23:00:02 SFPURGER DMSCYS2486I 0 of the 2520 spool files HAVE been handled by user
exits.
23:00:03 SFPURGER DMSCYS2466I Run terminating - Return code 0.
23:00:03 SFPURGER DMSCYS2465I SFPURGER RUN13021 has ended.
23:00:03 OPERATOR 23:00:03 USER DSC LOGOFF AS SFPURGER USERS = 56
23:01:02 DIRMAINT DVHRLY3886I Hourly processing started; with 0 log
23:01:02 DIRMAINT DVHRLY3886I files.
23:01:02 DATAMOVE DVHRLY3886I Hourly processing started; with 0 log
23:01:02 DATAMOVE DVHRLY3886I files.
----- Tuesday January 22 2013 -----
00:00:00 OPERATOR 00:00:00 ""HCPMID6001I TIME IS 00:00:00 PST TUESDAY 01/22/1
3 ""
00:00:00 SYSTEM RSCSAUTH: ""HCPMID6001I TIME IS 00:00:00 PST TUESDAY 01/22/
13 ""
00:00:00 SYSTEM TCPIP2 : ""HCPMID6001I TIME IS 00:00:00 PST TUESDAY 01/22/
13 ""
00:00:00 OPERATOR 00:00:00 HCPMXE6224I Event recording is pending because there
are no users connected to *MONITOR for this type of data.
PF1=Help 2= 3=Return 4= 5=All 6=PFKEY Off
PF7=Backward 8=Forward 9=Loc Back 10=Loc Fwd 11= 12=Retrieve
====>
:00.5 043/008
  
```



Questions?

Velocity Software Inc.
196-D Castro Street
Mountain View CA 94041
650-964-8867

Velocity Software GmbH
Max-Joseph-Str. 5
D-68167 Mannheim
Germany
+49 (0)621 373844

Rich Smrcina
Velocity Software, Inc.
rich@velocitysoftware.com