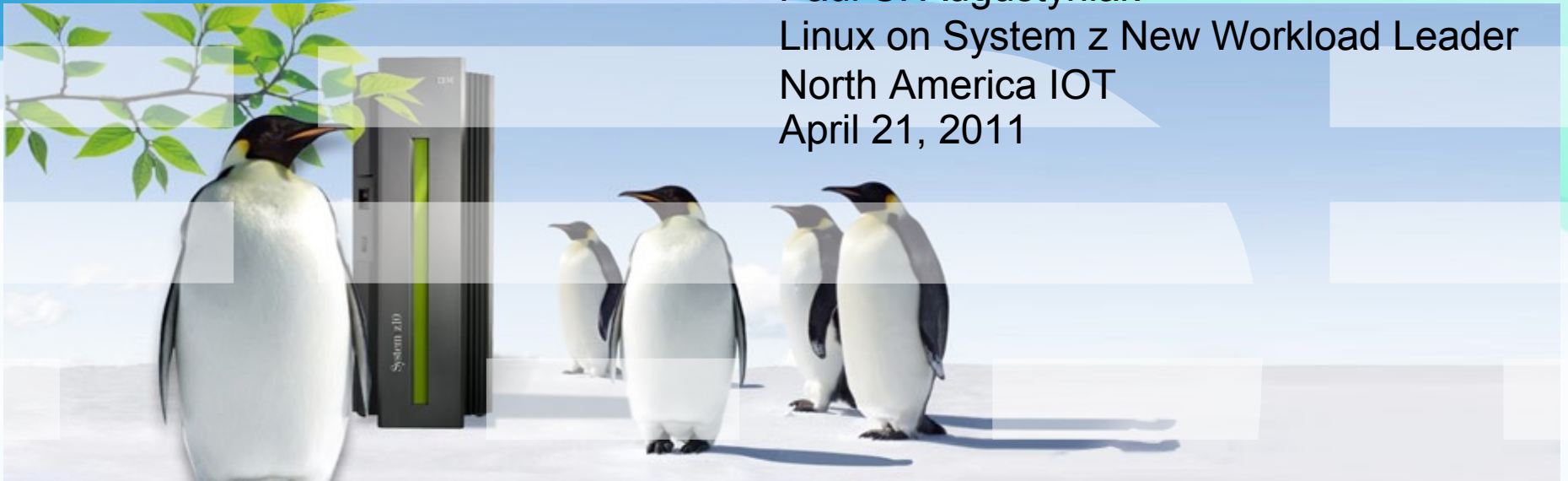


CAVMEN – Linux on System z Update

Paul S. Augustyniak
Linux on System z New Workload Leader
North America IOT
April 21, 2011



News You Can Use....

IBM United States Hardware Announcement 111-078: Statement of General Direction (12 April, 2011)

In the third quarter of 2011, IBM intends to offer select IBM System x blades running Linux® on System x in the IBM zEnterprise BladeCenter Extension Model 002.

In the fourth quarter of 2011, IBM intends to offer select IBM System x blades running Microsoft Windows® in the IBM zEnterprise BladeCenter Extension Model 002.

All statements regarding IBM's plans, directions, and intent are subject to change or withdrawal without notice. Any reliance on these statements of general direction is at the relying party's sole risk and will not create liability or obligation for IBM

News You Can Use....

- **SUSE Linux Enterprise-based technologies and IBM's zEnterprise System:**
http://www.novell.com/connectionmagazine/2011/03/sles_and_zenterprise.html?sourceid=NCM_0311_department2
- Oracle 11gR2 for Linux on System z – now supported!
- Guardium Technologies – “agent” (S-TAP) supports Linux on z which means databases on Linux can be monitored by Guardium. An “agent” also supports z/OS
- Maximo Asset Management – now supported!
- Filenet P8 Business Process Manager – now supported!
- Filenet P8 Content Manager – now supported!
- Let me know if there is an IBM Middleware product of interest to your company

System z Events:

Upcoming Webcast: IBM zEnterprise™, an optimized system, and all the recently announced IBM software solutions that it supports

Broadcast date: May 11, 2011 at 11:00 a.m. Eastern Daylight Time, 3:00 p.m. GMT

Developed for: IT architects, enterprise architects and IT managers

Technical level: Intermediate

http://www.ibm.com/software/os/systemz/webcast/may11/index.html?S_TACT=100GU00W&S_CMP=5x5

Upcoming Webcast: The importance of high availability, scalability and performance to deliver on a successful business analytics strategy

Broadcast date: May 3, 2011 at 11:00 a.m. Eastern Daylight Time, 3:00 p.m. GMT

Developed for: IT directors; IT managers, business intelligence (BI) managers and data warehousing managers, BI program and project managers; business analysts

Technical level: Basic

http://www.ibm.com/software/os/systemz/webcast/may3/index.html?S_TACT=100GU61W&S_CMP=5x5

Upcoming Webcast: SOA enablement of IMS at Ford – leveraging System z

Broadcast date: May 10, 2011 at 11:00 a.m. Eastern Daylight Time, 3:00 p.m. GMT

Developed for: Developed for: IT managers; IT and enterprise architects; database administrators ; business and systems analysts; application programmers and development managers

Technical level: Intermediate

http://www.ibm.com/software/os/systemz/webcast/may10/index.html?S_TACT=100GU62W&S_CMP=5x5

But wait.....there's more:

Upcoming Webcast: Solving application and network issues with OMEGAMON® and NetView

Broadcast date: May 26, 2011 at 11:00 a.m. Eastern Daylight Time, 3:00 p.m. GMT

Developed for: IT and enterprise architects; IT managers; systems programmers; operations managers; and, systems analysts

Technical level: Intermediate

http://www.ibm.com/software/os/systemz/webcast/may26/index.html?S_TACT=100GV67WW&S_CMP=5x5

Upcoming Webcast: 10 things you didn't know about business process management on System z

Broadcast date: May 18, 2011 at 11:00 a.m. Eastern Daylight Time, 3:00 p.m. GMT

Developed for: IT directors, managers and project managers; business analysts; enterprise architects; database administrators and managers; and, application database administrators

Technical level: Intermediate

http://www.ibm.com/software/os/systemz/webcast/may18/index.html?S_TACT=100GT75W&S_CMP=5x5

Webcast Replay: Problem Reporting and Analysis Linux on System z - How to survive a Linux critical situation

Original broadcast date: April 6, 2011

Developed for: IT and enterprise architects; solution analysts and managers; system administrators; and operations managers and sys. progs.

Technical level: Intermediate

<http://www.vm.ibm.com/education/lvc/> - **SAVE THIS ADDRESS** – education library of replays

Other Great Stuff....Did you know...

zBX Technical Seminars ~~coming soon to Chicago~~ ON HOLD

Who said that????:

- **IBM System z: New Strategies for a New Age:** "It is clear that IBM is investing to make sure that System z sees growth in 2011, and that new sales will include both return customers and net-new ones." Jean Bozman, IDC
- **Grey Hairs And Red Herrings:** IBM mainframe skills resurgence is a triumph of Developer Relations: "IBM ... has taken an unfashionable platform and built a successful skills program for it directly targeting a great economic opportunity - a likely career in financial services. IBM has invested heavily, and is getting a return on its investment. Younger cooler platforms could learn a lot from IBM's mainframe developer relations efforts." James Governor, RedMonk
- **Are mainframes the original cloud?** "...with zBX extensions, zEnterprise promises to deliver state-of-the-art cloud-like capabilities for those who are open-minded in applying mainframe technology." Rich Partridge, Ideas International
- **"The zEnterprise System is more than IBM's next generation mainframe.** The new architecture employed in this heterogeneous server ecosystem creates a new disruptive paradigm that can simplify data center operations, improve productivity and responsiveness, lower costs, eliminate duplicate databases and reduce risk." Cal Braunstein, Robert Frances Group

Wildfire Classes:

Workshops offered during this period are:

- *NEW - Cloud Computing on zEnterprise and System z (CCLX1)**
- **Security Workshop: WebSphere Application Server for z/OS (WSW07)**
- Deploying WebSphere Centric Products on Linux for System z (LINX6)
- ***Customizing Linux and the Mainframe for Oracle DB Applications(LX0R6)**
- ****z/OS JAVA Exploiters and JAVA Batch Workshop (ZJAV1)**
- WebSphere Message Broker for z/OS Version 6.1 Workshop (WMB06)
- WebSphere Process Server V6.1 for z/OS Implementation Workshop (ZWPS6)
- WebSphere Portal Server on Linux for System z Version 6.1 (ZPRT1)
- WebSphere Application Server for z/OS Version 7.0 (WBSR7)

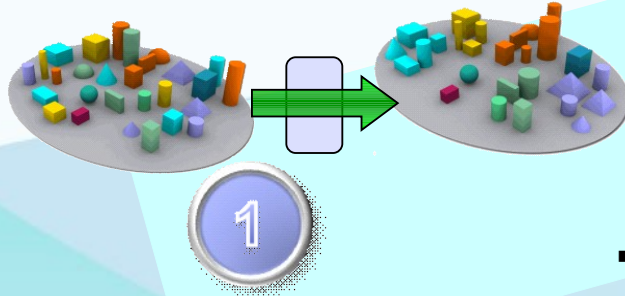
Chicago: April 27-28 *Detroit: July 20-21**

****Argentina: May 17-19 ***Gaithersburg: May 10-12**

A Step by Step Approach for Cloud on zEnterprise

Take Out Cost

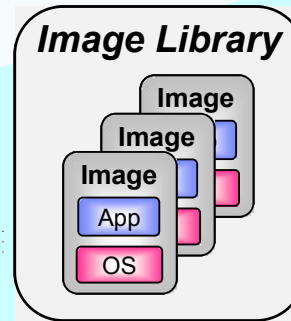
STEP 1 Consolidate and Virtualize



- Exploit the extreme virtualization capabilities of System z and z/VM
- Use basic z/VM features and functions to manage virtual Linux servers

Simplify

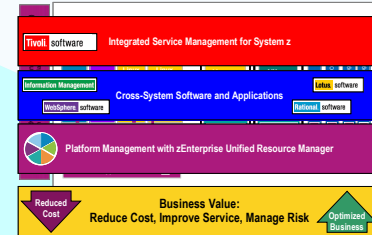
STEP 2 Automate and Manage Better



- Use advanced z/VM features and functions for automated operations and service delivery
- Introduce Systems Director for additional image management
- Add Tivoli technologies for greater levels of service management

Integrate and Optimize

STEP 3 Cross-architecture Workload Optimization



- zEnterprise is the industry's only multi-architecture cloud solution
- Use a cloud deployment model to host multi-tier solutions across System z, POWER and System x resources
- Use the Unified Resource Manager and Tivoli ISM for optimal workload placement

Cloud Offerings and Products

Enterprise Linux Server (z10, z196)
Solution Edition for Enterprise Linux

IBM Systems Director and VMControl
Solution Edition for Cloud Computing

zEnterprise System and zManager
Tivoli Integrated Service Management

Mark your Calendar:

Upcoming Events/Conferences:

SHARE – Orlando, FL

Aug 7 - 12, 2011